



# Reflective Blade for HUD

Inspired by windshield black-band projection made by AGC, Reflective Blade is a new HUD projection surface integration.

Falcon™ glass assembly coated with p-polarized layer, compatible with polarized sunglasses.

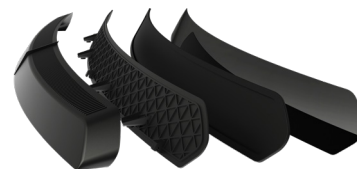
## Main features & benefits



Dashboard integration independent of the windshield, able to extend from pillar-to-pillar



Coating's reflectivity level adjustable to match display's consumption and rendering requirements



Encapsulation of ultra-thin glass allowing for seamless appearance, curved finish and flush edge



Safety standards of interior glazing met thanks to encapsulation (non-HIT)



Full module assembly resulting in a lightweight setup compared to traditional display configuration



Cost-effective alternative compared to conventional display setups

## Integration concepts

Driver focus



Panoramic



## Applications



**For product enquiries:**  
[www.feelinglass.eu](http://www.feelinglass.eu)  
[feelinglass@agc.com](mailto:feelinglass@agc.com)